

# Art in the United States from the American Revolution to the Civil War

Prof. Kimberly Rhodes  
NEH Distinguished Teaching Professor in the Humanities  
Professor of Art History  
Drew University  
[krhodes@drew.edu](mailto:krhodes@drew.edu)

## Class Schedule

January 31: Early Colonial Arts

February 7: Art, Revolution, and the New Nation

February 14: The Body Politic

February 21: Native and European Arts at the Boundaries of Culture

February 28: Nature's Nation & The Civil War

*Text: American Encounters: Art, History, and Cultural Identity*



Emanuel Leutze, *Westward the Course of Empire Takes Its Way*, 1862, mural, House Wing, west stairway, US Capitol, 20 x 30 ft.



Side-seam dress from Northern Plains, Upper Missouri Territory, collected 1804



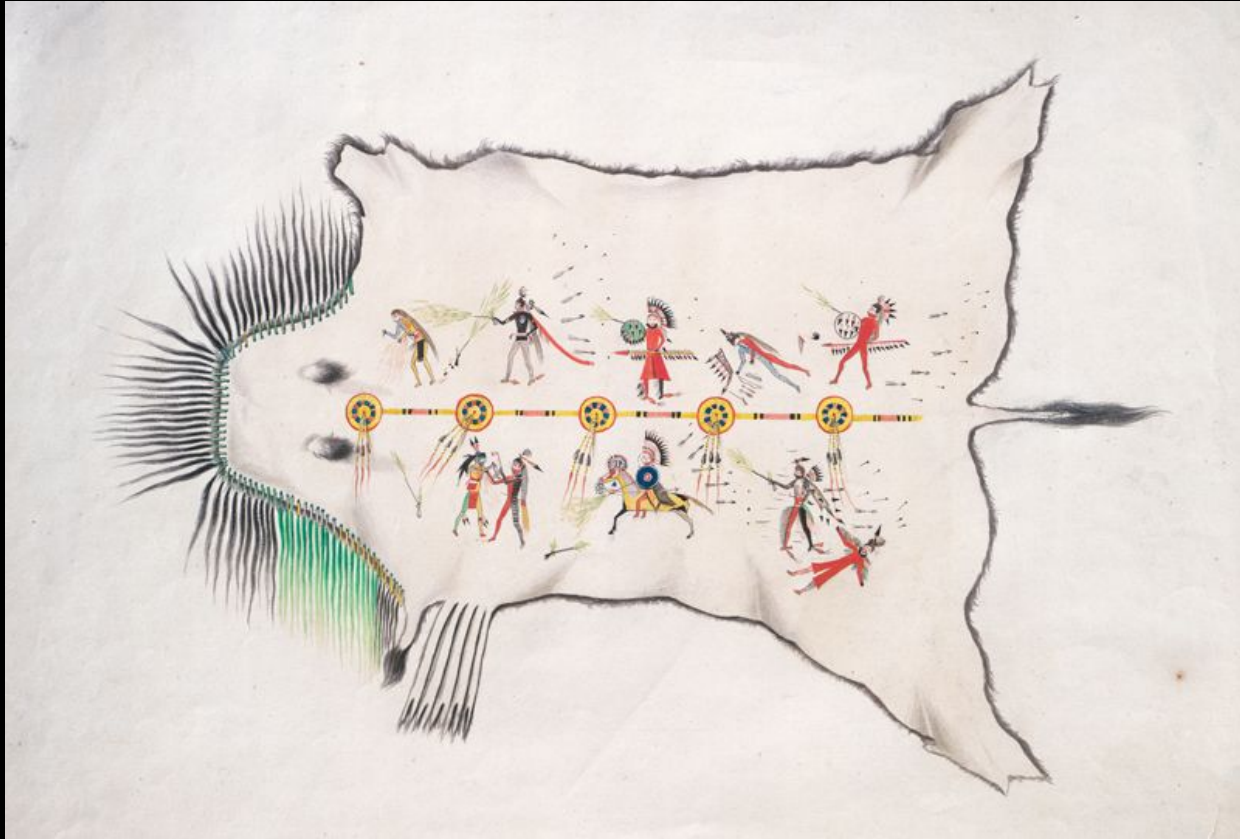
19<sup>th</sup>-c side seam dress



Ma-to-toh-pa (Mandan), painted buffalo robe, c. 1835



Mató-Tópe (Four Bears),  
*Battle with a Cheyenne Chief*, 1833



Karl Bodmer, *Mandan Buffalo Robe*, no date





George Catlin, Mah-to-toh-pa, 1832



Karl Bodmer, Mah-to-toh-pa, 1834



Bodmer, Piegan Blackfoot Man, 1833



Kiasax, Piegan Blackfoot Man  
Karl Bodmer, 1833-1834  
© Metcalf, W. 1984

Karl Bodmer, *Kiasax, Piegan Blackfoot Man*, 1833-4



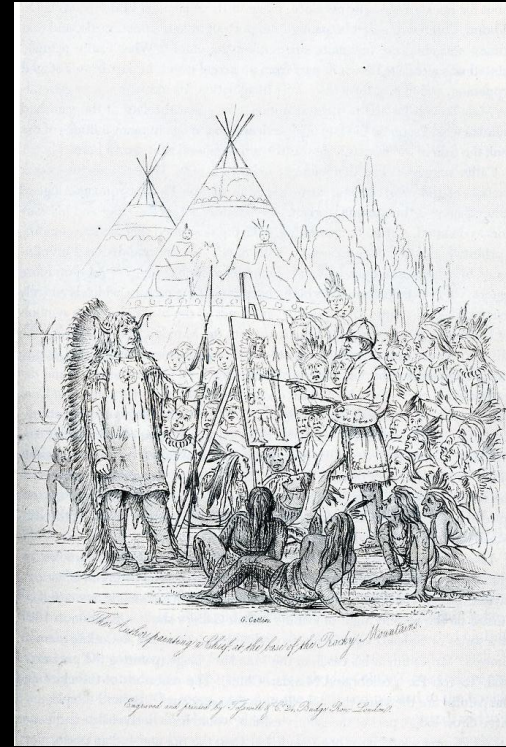
Karl Bodmer, *Assiniboin Camp*, 1833



Titian Ramsay Peale, *Canis Lupus*, 1819-22 (Long expedition)



Titian Ramsay Peale, Moth and Butterfly Mounts



Representations of Catlin by William Fiske (left) and Catlin (right)





George Catlin, Buffalo Bull's Back Fat (Blackfoot), 1832







George Catlin, *Wi-Jun-Jon (Pigeon's Egg Head) Going to and Returning from Washington, 1837-9*



John Ritto Penniman, *Meetinghouse Hill Roxbury*, 1799



Jacob van Ruisdael, *Grainfields*, 1660s



Claude Lorrain, *Pastoral Landscape: The Roman Campagna*, c. 1639



Alvan Fisher, *A General View of the Falls of Niagara*, 1820





Alvan Fisher, *The Great Horseshoe Fall, Niagara*, 1820



Thomas Cole, *Kaaterskill Falls*, 1826



Thomas Cole, *Niagara Falls*, 1830



Thomas Cole, *Expulsion from the Garden of Eden*, 1827-8

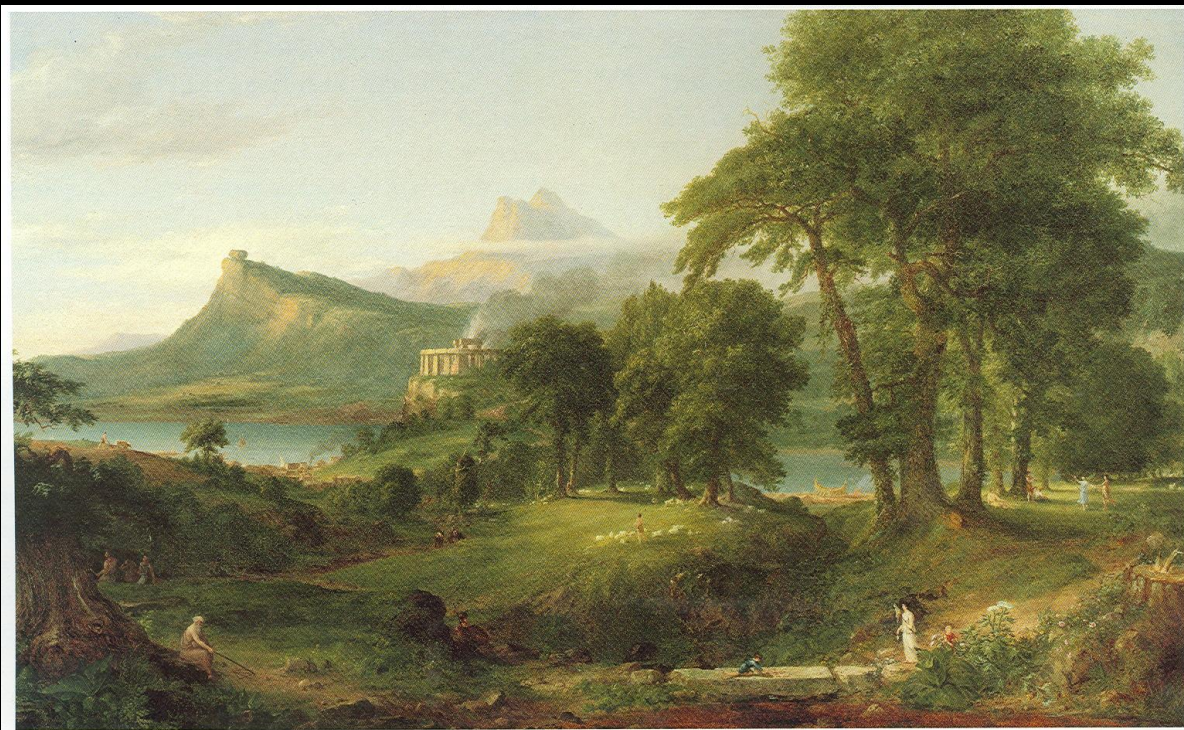


Thomas Cole, *View from Mt. Holyoke, Northampton, MA, after a Thunderstorm—The Oxbow*, 1836





Thomas Cole, *The Course of Empire: The Savage State*, 1834



104. *The Course of Empire: The Pastoral or Arcadian State*, 1834, oil on canvas, 39 $\frac{3}{4}$  x 63 $\frac{3}{4}$  in. (99.7 x 160.6 cm). The New-York Historical Society

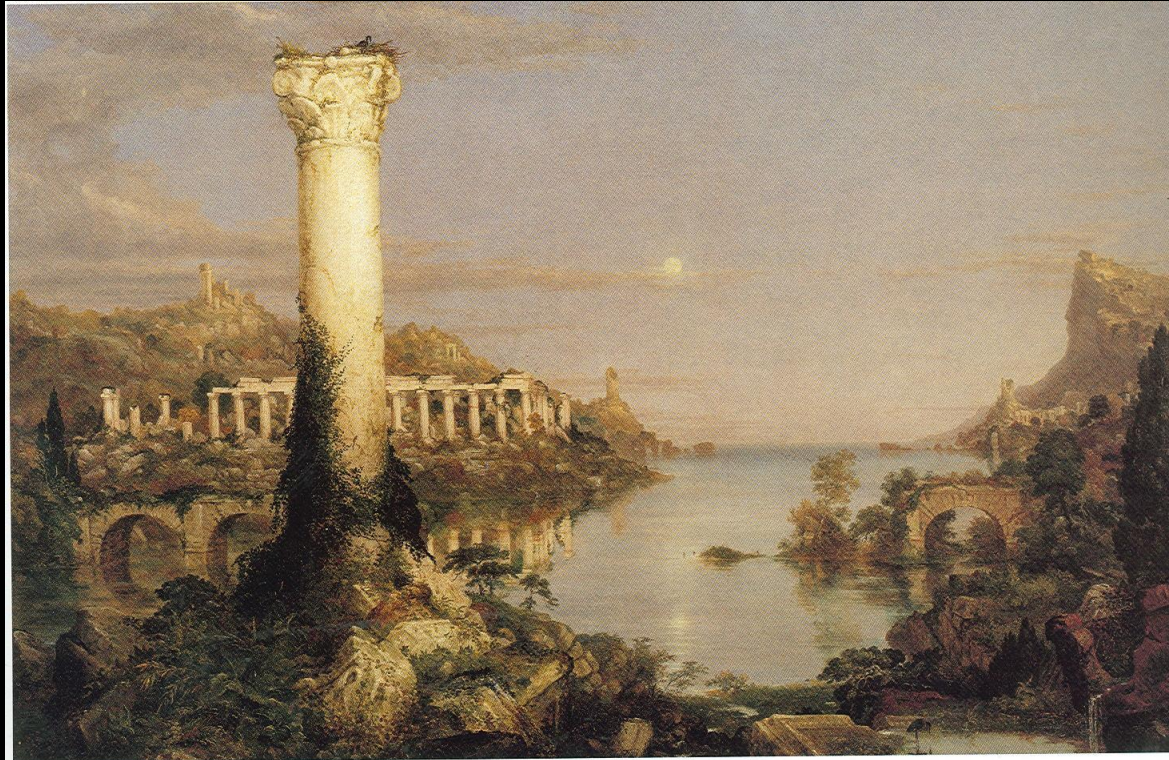




105. *The Course of Empire: The Consummation of Empire*, 1835–36, oil on canvas, 51¼ x 76 in. (130.2 x 193 cm). The New-York Historical Society



106. *The Course of Empire: Destruction*, 1836, oil on canvas, 33 $\frac{1}{4}$  x 63 $\frac{1}{4}$  in. (84.5 x 160.6 cm). The New-York Historical Society



107. *The Course of Empire: Desolation*, 1836, oil on canvas, 39 $\frac{1}{4}$  x 63 in. (99.7 x 160 cm). The New-York Historical Society